

Notre manière de tisser une toile d'idées.



Car Park One at Chesapeake

Photos: Scott McDonald © Hedrich Blessing – Courtesy of Elliott + Associates Architects

Architecte:
Elliott + Associates Architects
Walker Parking Consultants

Toile:
LARGO-PLENUS 2022

Application:
Façades

HAVER & BOECKER
Ennigerloher Straße 64
D-59302 OELDE
Germany

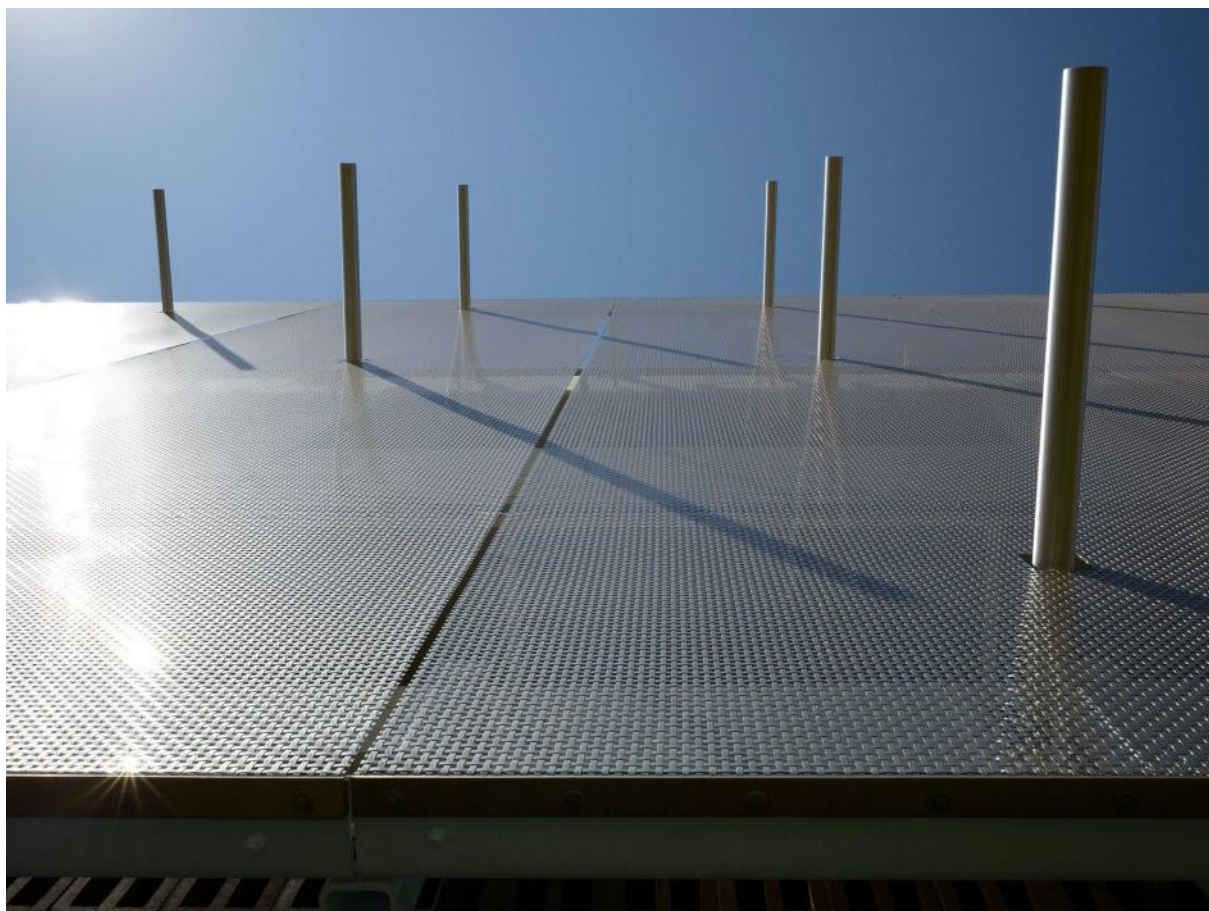
Telefon: +49-(0) 25 22-30 684
Fax: +49-(0) 25 22-30 767
E-Mail: architektur@haverboecker.com
Internet: www.diedrahtweber.com

HAVER & BOECKER



DIE DRAHTWEBER

Notre manière de tisser une toile d'idées.



Car Park One at Chesapeake

Photos: Scott McDonald © Hedrich Blessing – Courtesy of Elliott + Associates Architects

Architecte:
Elliott + Associates Architects
Walker Parking Consultants

Toile:
LARGO-PLenus 2022

Application:
Façades

HAVER & BOECKER
Ennigerloher Straße 64
D-59302 OELDE
Germany

Telefon: +49-(0) 25 22-30 684
Fax: +49-(0) 25 22-30 767
E-Mail: architektur@haverboecker.com
Internet: www.diedrahtweber.com

HAVER & BOECKER



DIE DRAHTWEBER